



DOES C-REACTIVE PROTEIN (CRP) DECREASE PROPORTIONATELY TO BMI AFTER BOTH LAP BAND AND LAPAROSCOPIC ROUX-EN-Y GASTRIC BYPASS?

Michael Faloon MS, Scott J Belsley MD, Daniel Farkas MD, Annette Wasielewski RN, Garth H Ballantyne MD

Department of Minimally Invasive Surgery, Hackensack University Medical Center, Hackensack, New Jersey

Background

Morbid obesity generates an inflammatory state. C-reactive protein (CRP) is a marker of inflammation. CRP levels are increased in morbid obesity and correlate with Body Mass Index (BMI kg/m^2).

Hypothesis

If morbid obesity generates an inflammatory state, weight loss following Lap Band and Laparoscopic Roux-en-Y Gastric Bypass will decrease markers of inflammation such as CRP.

Aims

To measure changes in Body Mass Index (BMI) following Lap Band and Laparoscopic Roux-en-Y Gastric Bypass

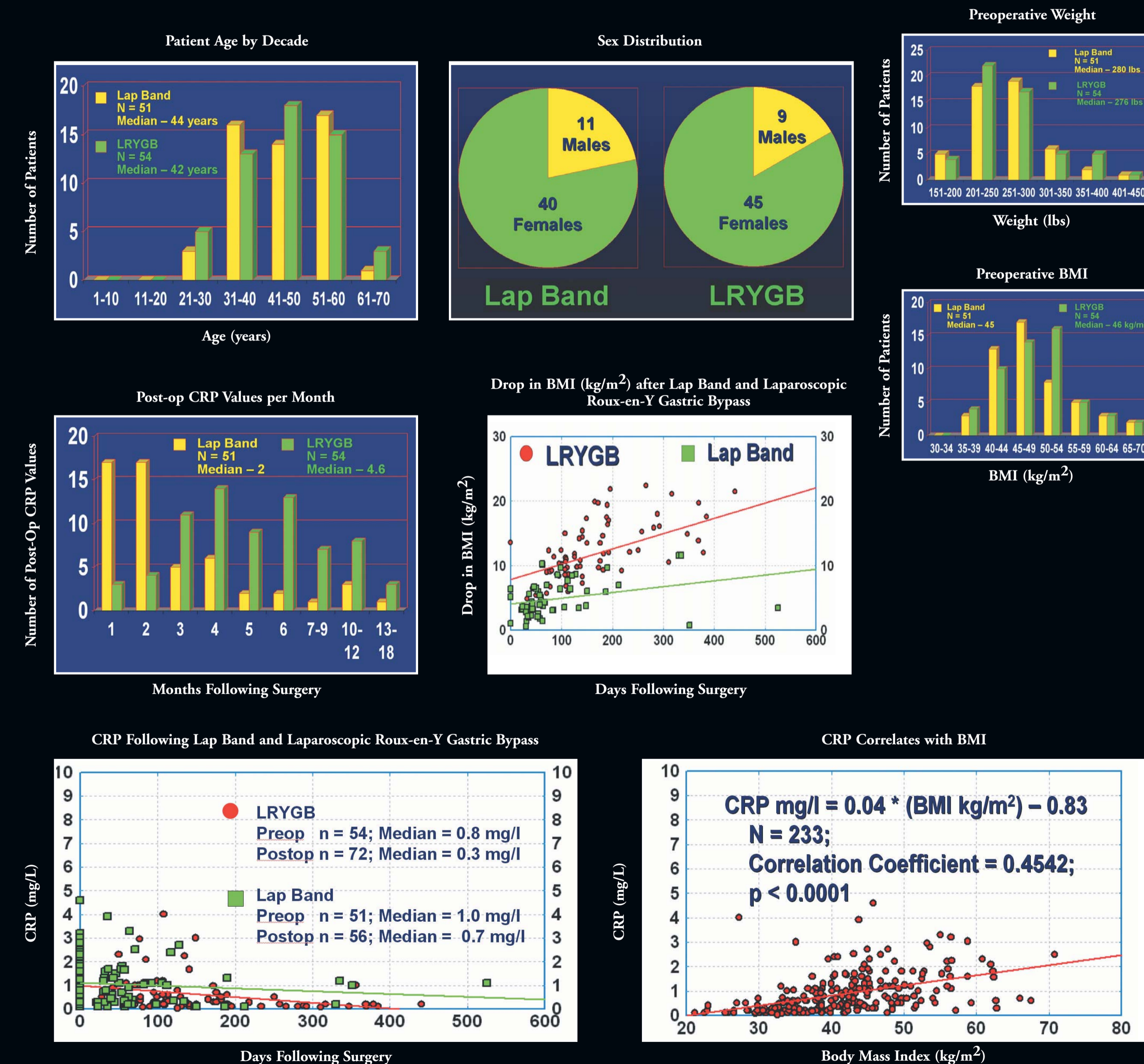
To monitor levels of C-reactive protein (CRP) following Lap Band and Laparoscopic Roux-en-Y Gastric Bypass

To test correlations between changes in BMI and CRP levels

Methods

Preoperative and postoperative weights and BMI were determined for 51 patients undergoing Lap Band and 54 patients undergoing Laparoscopic Roux-en-Y Gastric Bypass. Preoperative and postoperative CRP levels were measured using commercial laboratories. Data was collected in a prospective data registry. Groups were compared by ANOVA ($p < 0.05$).

Results



Summary

Lap Band and Laparoscopic Roux-en-Y Gastric Bypass patients were similar in age, sex distribution and BMI. Preoperative CRP levels were similar for Lap Band and Laparoscopic Roux-en-Y Gastric Bypass patients. Follow up for Laparoscopic Roux-en-Y Gastric Bypass patients was significantly longer. Weight loss and drop in BMI was greater for the Laparoscopic Roux-en-Y Gastric Bypass patients. CRP dropped significantly following both Lap Band and Laparoscopic Roux-en-Y Gastric Bypass. Preoperative and postoperative CRP levels for both groups correlated with BMI.

Conclusion

Drop in CRP following both Lap Band and Laparoscopic Roux-en-Y Gastric Bypass correlates with changes in BMI.

Implication

Weight loss surgery treats the inflammatory condition associated with morbid obesity.